

# *A Conversation About the*



# **SAFE SYSTEM** APPROACH

Zero is our goal. A Safe System is how we get there.



U.S. Department of Transportation  
Federal Highway Administration

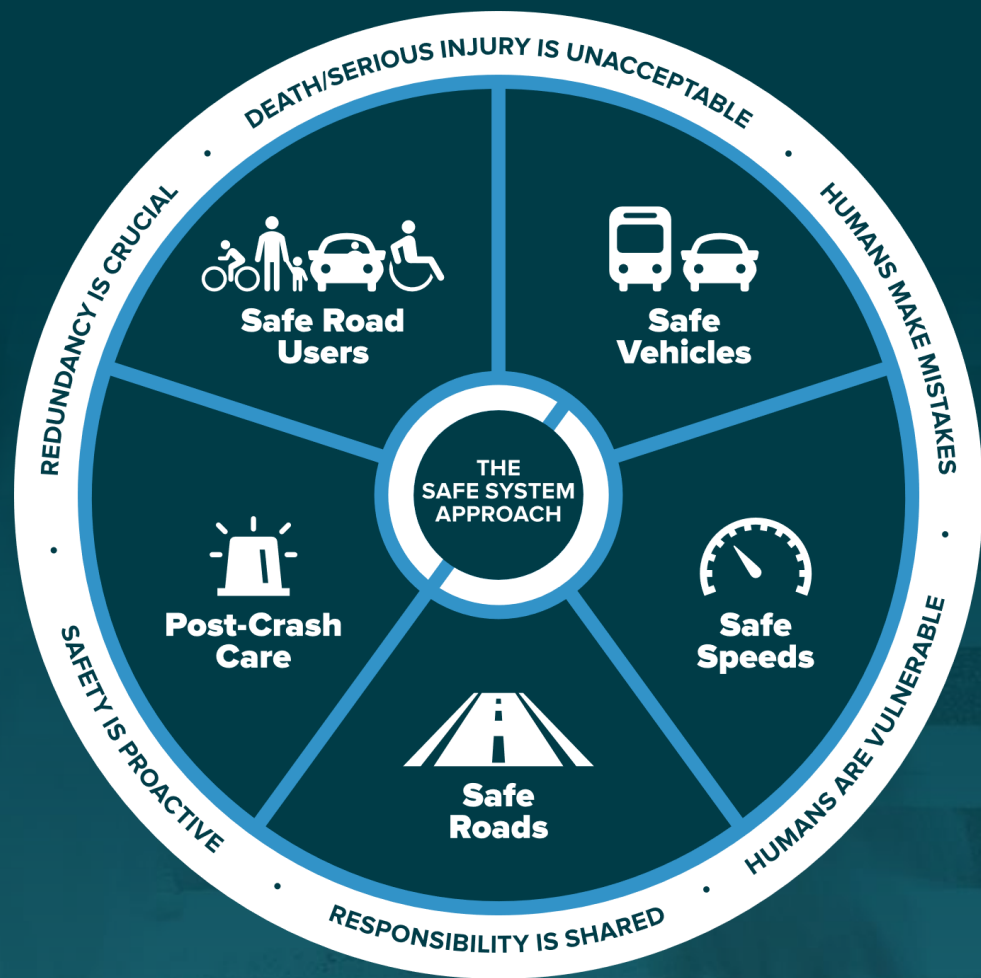
Laura Cerutti, MPH, CHES  
Director of Program Development



**Avenues in Motion**

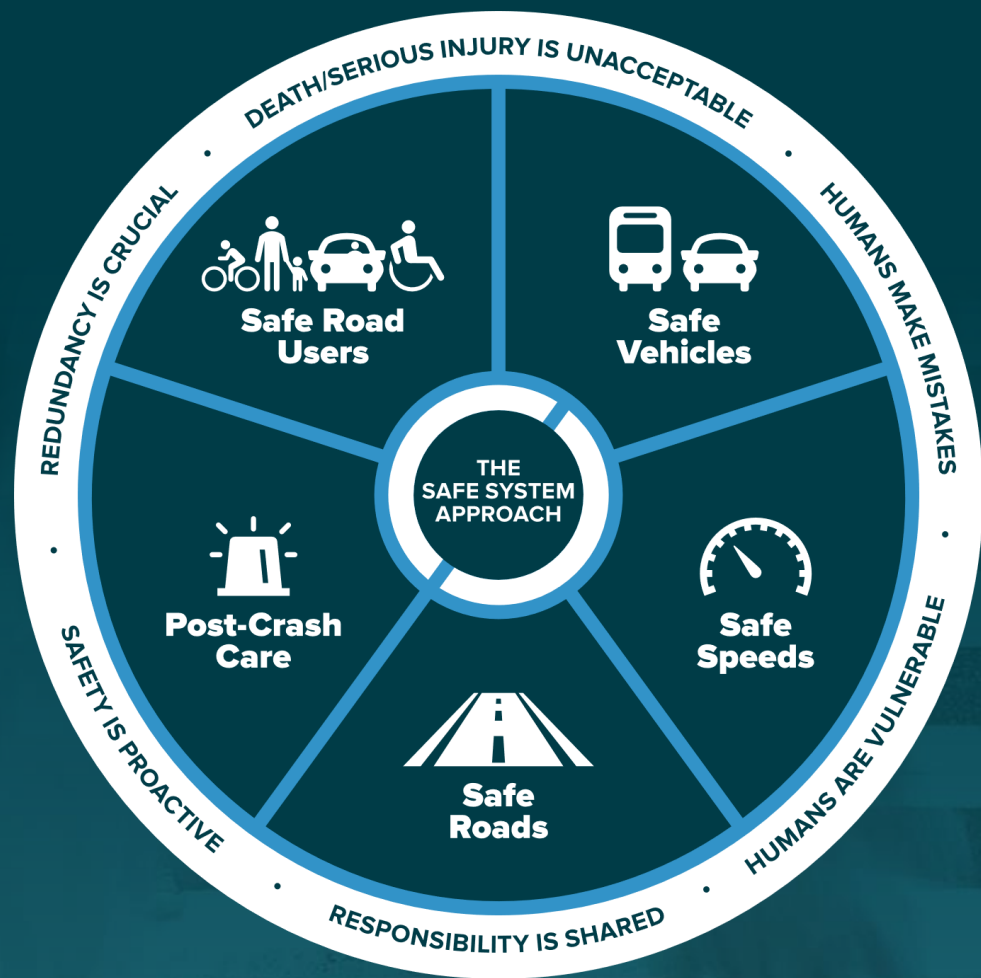
Improving Community Transportation Options

**ZERO** IS OUR GOAL  
A SAFE SYSTEM IS HOW WE GET THERE



## *How familiar are you with the Safe System Approach?*

- Not at all Familiar
- Somewhat Familiar
- Very Familiar



## *How familiar are you with the Safe System Approach?*

- Not at all Familiar
- Somewhat Familiar
- Very Familiar



U.S. Department  
of Transportation

## National Roadway Safety Strategy

United States Department of Transportation | January 2022

# *First ever national goal of* **ZERO**

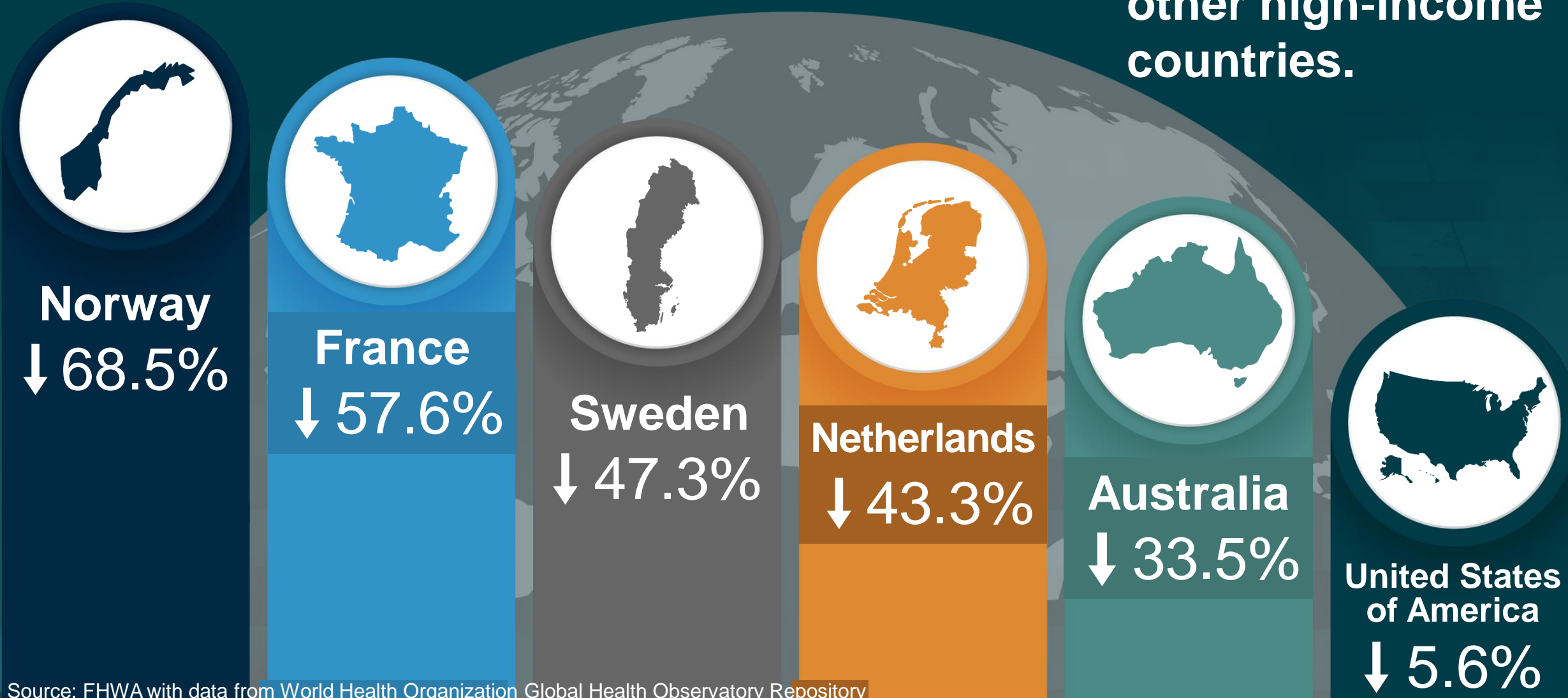
The Safe System Approach is the guiding paradigm of the National Roadway Safety Strategy (NRSS)

**Zero** is our goal and the Safe System Approach is how we get there

# SUCCESSFUL SAFE SYSTEM ADOPTERS

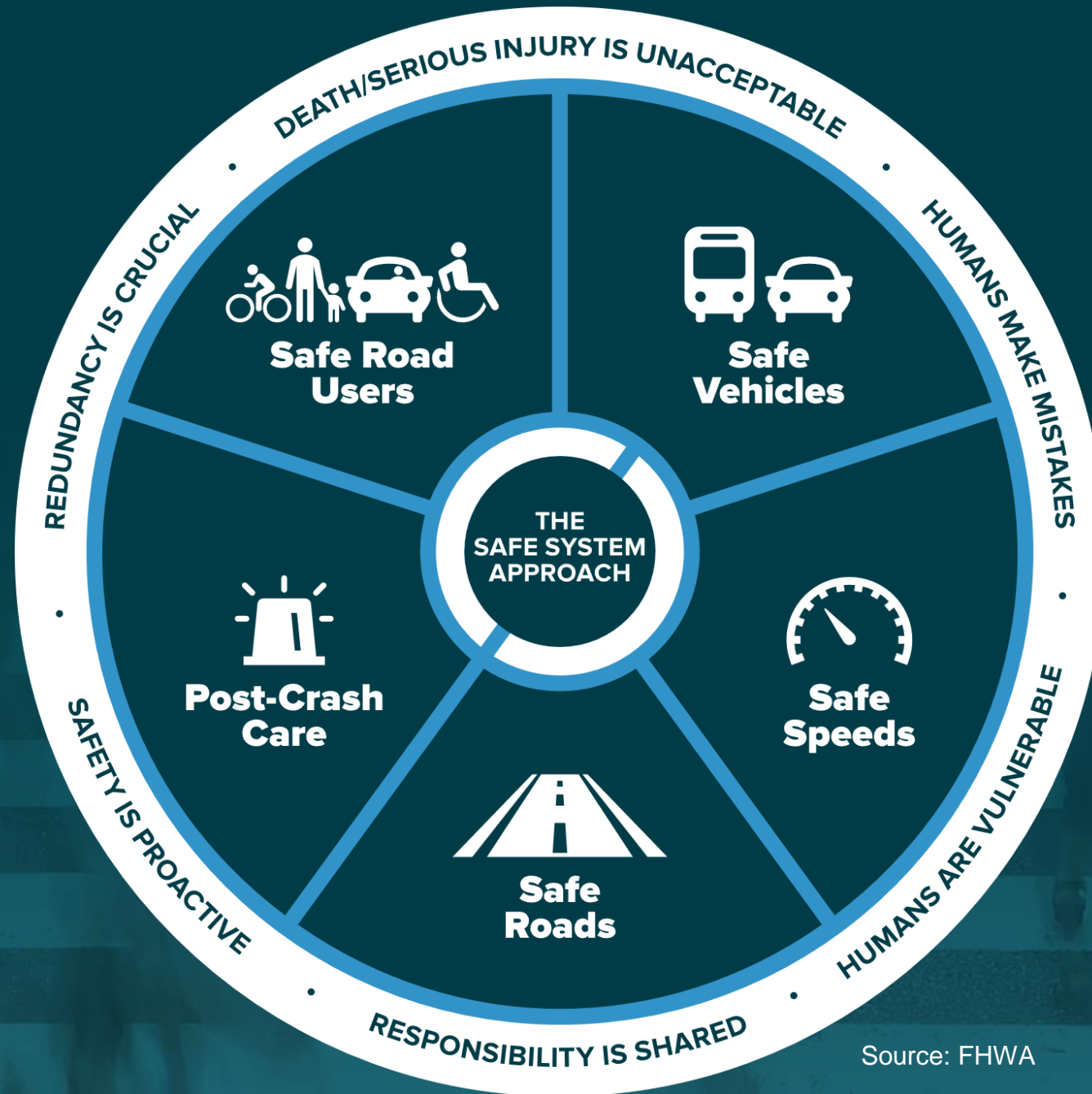
Changes from 2000 to 2019.

U.S. crash rate is **TWICE** that of other high-income countries.



Source: FHWA with data from World Health Organization Global Health Observatory Repository

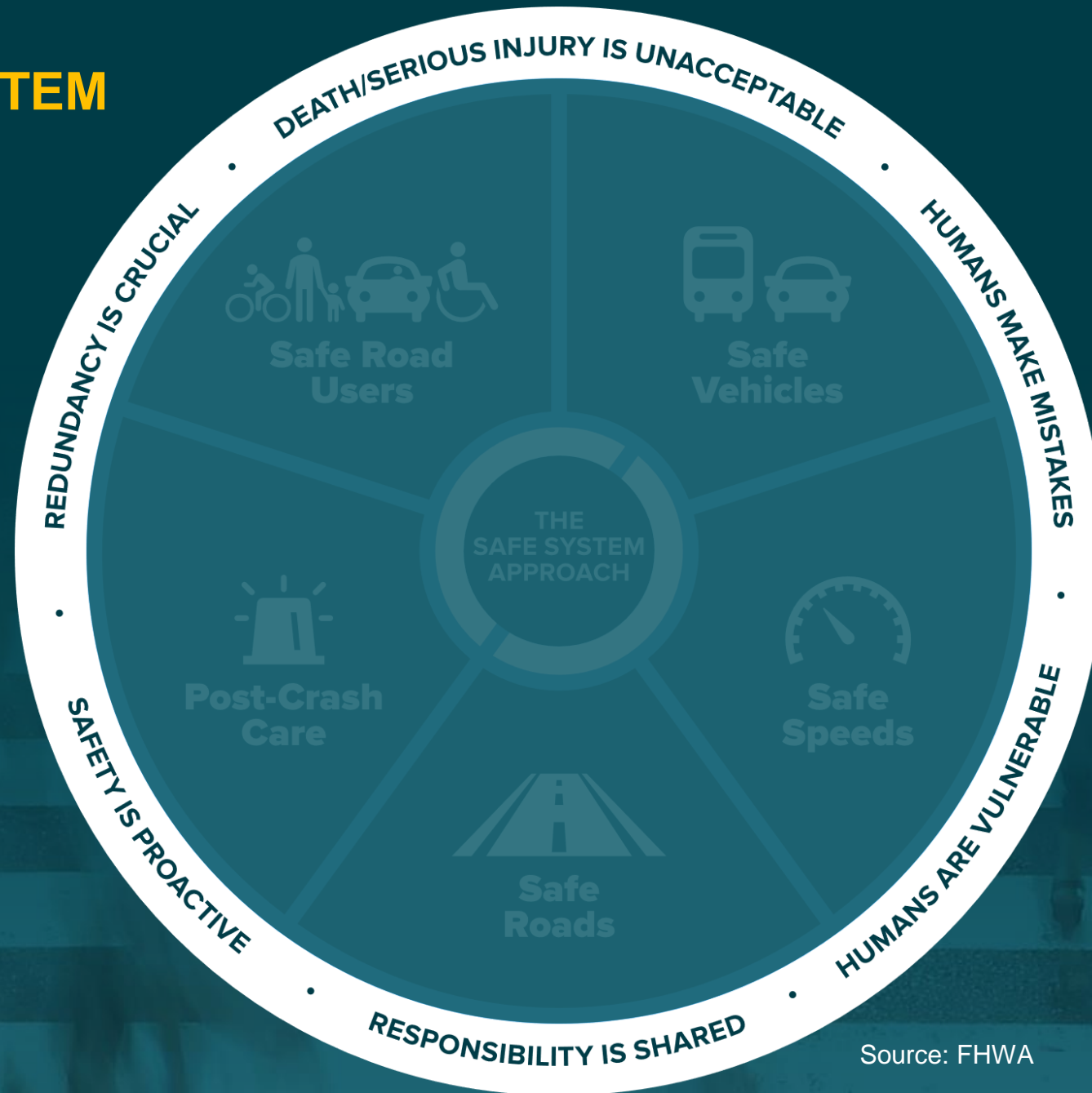
# THE SAFE SYSTEM APPROACH



*It is a system - depends on all of its parts working together*

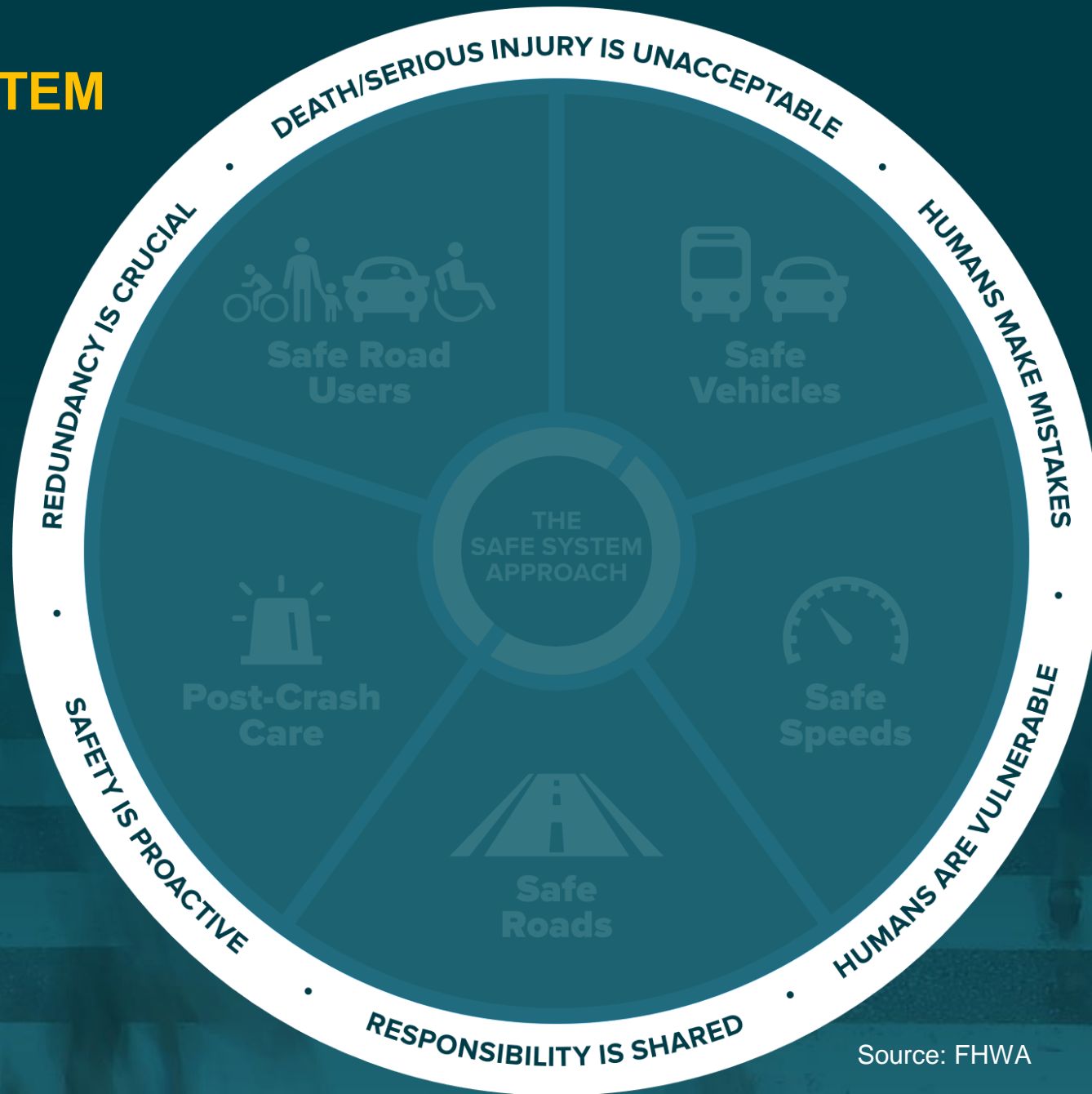
*Requires supporting safety culture where safety is top priority in the roadway system and investment decisions*

# THE 6 SAFE SYSTEM PRINCIPLES



Source: FHWA

# THE 6 SAFE SYSTEM PRINCIPLES



Death/Serious Injury is unacceptable



Humans make mistakes



Humans are vulnerable



Responsibility is shared



Safety is proactive



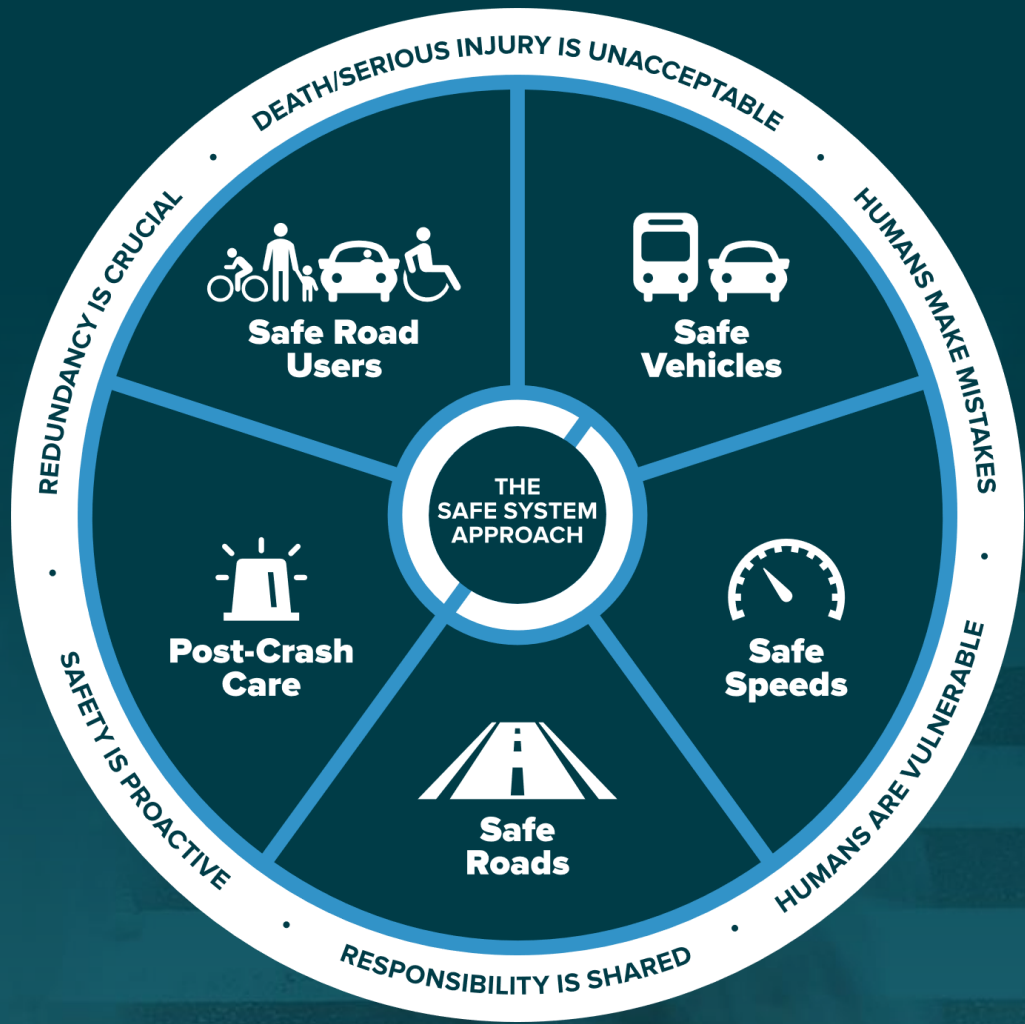
Redundancy is crucial



# THE 5 SAFE SYSTEM ELEMENTS



Source: FHWA



## Traditional

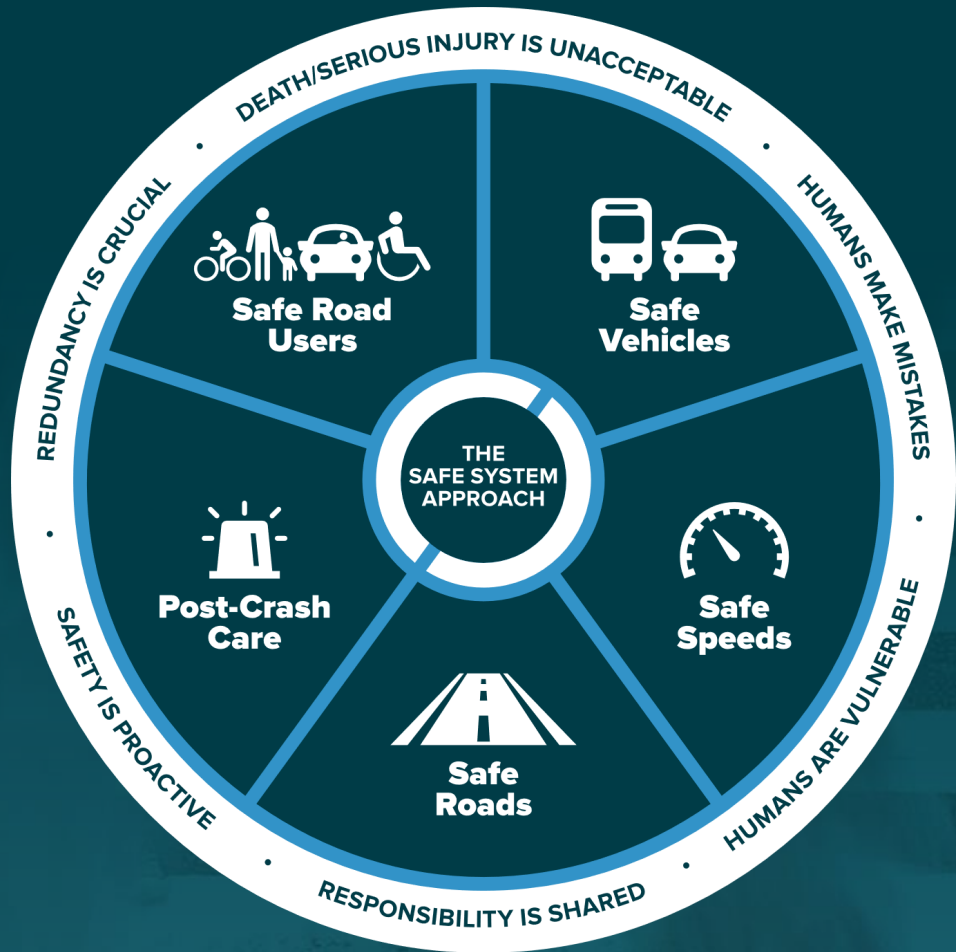
- Prevent crashes → Prevent deaths and serious injuries
- Improve human behavior → Design for human mistakes/limitations
- Control speeding → Reduce system kinetic energy
- Individuals are responsible → Share responsibility
- React based on crash history → Proactively identify and address risks

## Safe System

*How is the Safe System Approach connected to other traffic safety initiatives?*



# A Conversation About the Safe System Approach



## *Post-Crash Care*

### **Stephen Dunn**

aka "The Biking Fireman";  
NJ EMT and Firefighter,  
Elizabeth Fire Department



## *Safe Speeds*

### **Lauren Paterno**

Senior Government  
Affairs Advisor,  
AAA Northeast



## *Safe Road Users*

### **Pam Shadel Fischer, MLPA**

Governors Highway Safety  
Association; Chair of the  
Avenues in Motion Board of  
Directors



## *Safe Roads*

### **Rachana Sheth, AICP/PP**

Senior Urban  
Designer/Planner,  
NV5

**Moderated by Laura Cerutti, MPH, CHES**  
Director of Program Development, Avenues in Motion